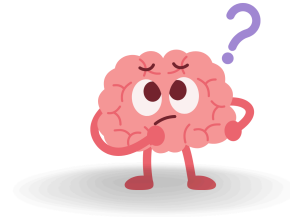


Let's Think Together

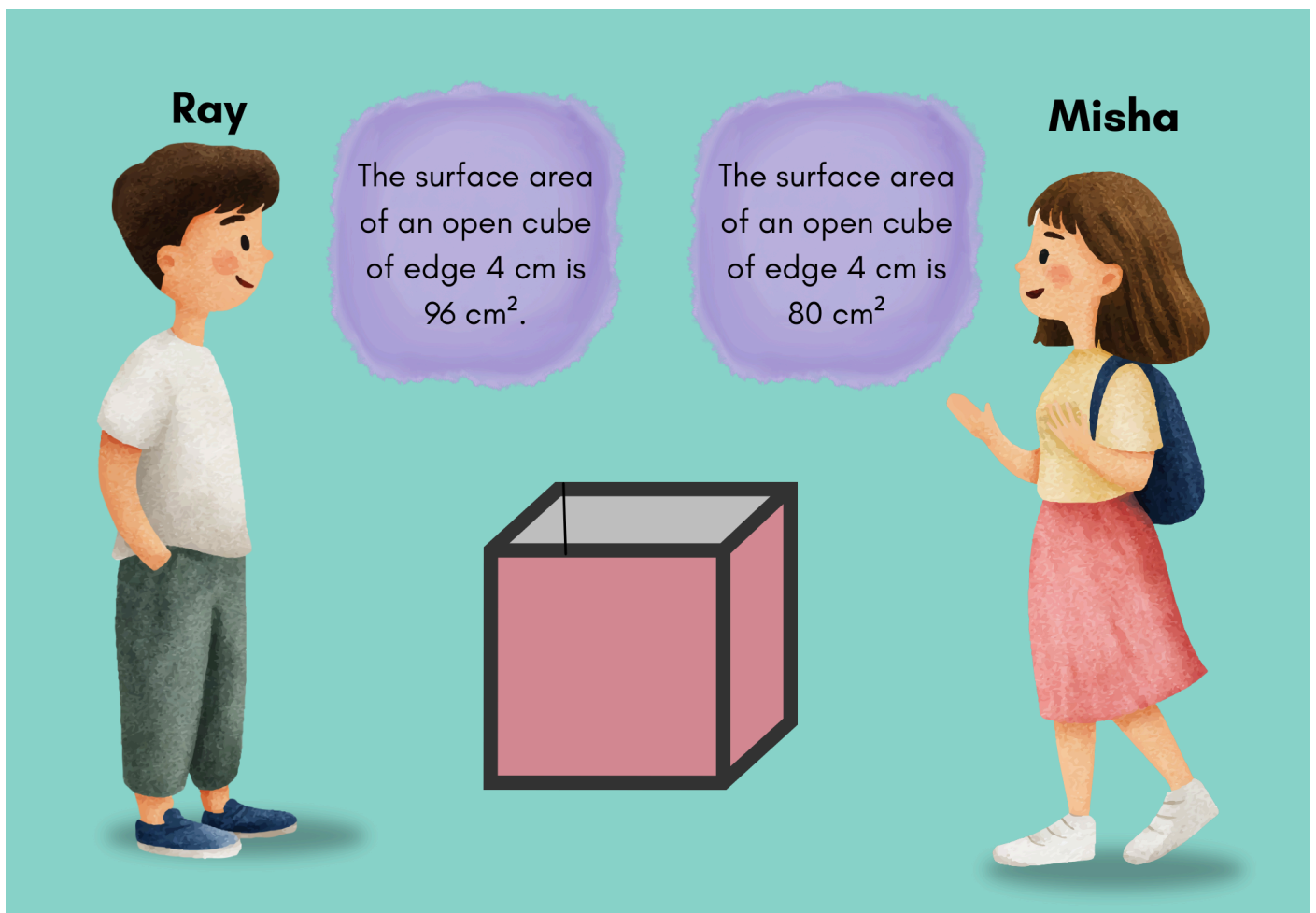


Two students are looking at the same open cube, but they disagree. Look carefully at what each student says.

Ray says: “The surface area of an open cube of edge 4 cm is 96 cm^2 .”

Misha says: “The surface area of an open cube of edge 4 cm is 80 cm^2 .”

In your group, discuss and decide who is correct. Or could both be wrong?



Explain your thinking by writing your thoughts in the box below.

